



# All Saints Fenton

## A VISUAL GUIDE



DIOCESE OF LINCOLN  
faithful · confident · joyful

Thank you for coming to All Saints church in Fenton.

People have worshiped God in this church for over 600 years.

We hope you will stay a while and enjoy your visit.

For information about the services held regularly in All Saints, please look at our web site at

[www.claypolebenefice.org](http://www.claypolebenefice.org)

If you are able to give a donation please do so to help us maintain the fabric of this church for future generations.



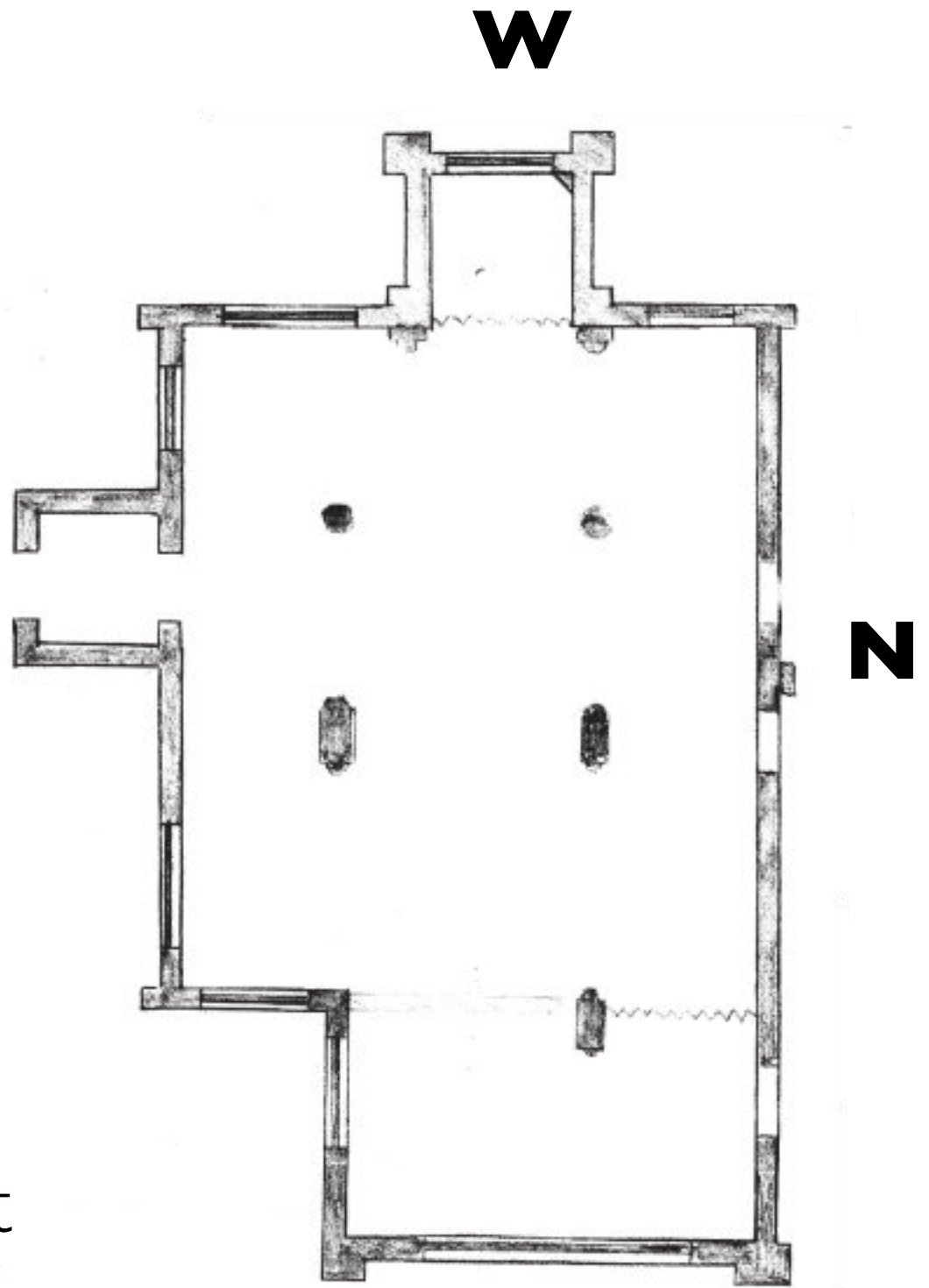
DIOCESE OF LINCOLN  
faithful · confident · joyful



THE CHURCH  
OF ENGLAND

The west wall of the porch was rebuilt in a rich grey stone in 1875

**S**



Fenton hall is adjacent to the church in its north east corner and was the former seat of the Lucas family. Parts of the hall are dated from 1597.

The church shows development over many centuries and significant development took place in 1875 funded by the Lucas family. More recently repairs and refurbishment were undertaken in 2005.



# EARLY DEVELOPMENT

## **12<sup>th</sup> Century**

The plain single chamfered north doorway is circa 1200 and is now blocked up with more modern red bricks.. The sturdy north arcade is of late Norman period (12th century) with double chamfered semi circular arches , a scalloped capital and a strong cylindrical pier, on which are traces of medieval paintings

## **13 / 14<sup>th</sup> century**

The arches between the tower two bay arcades and the chancel are most likely early 13th century. The aisles , chapel and porch are 14th century and built of ironstone with bands of Ancaster stone from the nearby quarry. The south arcade, like the arch between the chancel and chapel is of late 13th to 14th century.

## **15<sup>th</sup> Century**

The tall triple chamfered tower arch is 15th century

# THE TOWER

The 15th century west tower is of three unequal stages divided by thick string courses. It carries a recessed crocketed spire, built of grey ashlar stone.

## **Ground Stage**

In the west wall of the ground stage is a two light window.

## **Central Stage**

This has a quatre foiled window on each face except the east, where the steep roofline of an earlier nave roof with an ironstone wall within, remains.

## **Top Stage**

Each face has two light bell openings and carries an embattled parapet with corner pinnacles, below which is a cusped lozenge frieze. In the spire are two tiers of lucarnes (spire lights) set in different faces, the lower two light and the upper a single light.

Externally at each corner of the tower and at each end of the south aisle and east end of the chapel there are grotesque gargoyles.



# THE BELLS

There are three bells in the tower.

Treble inscribed AVE MARIA

2nd inscribed JHESVS BE OVR SPEDE 1596

Tenor -inscribed "all men that hear my mornfull sound repent before you lye in ground 1627.

Until the 1850's there were four bells.





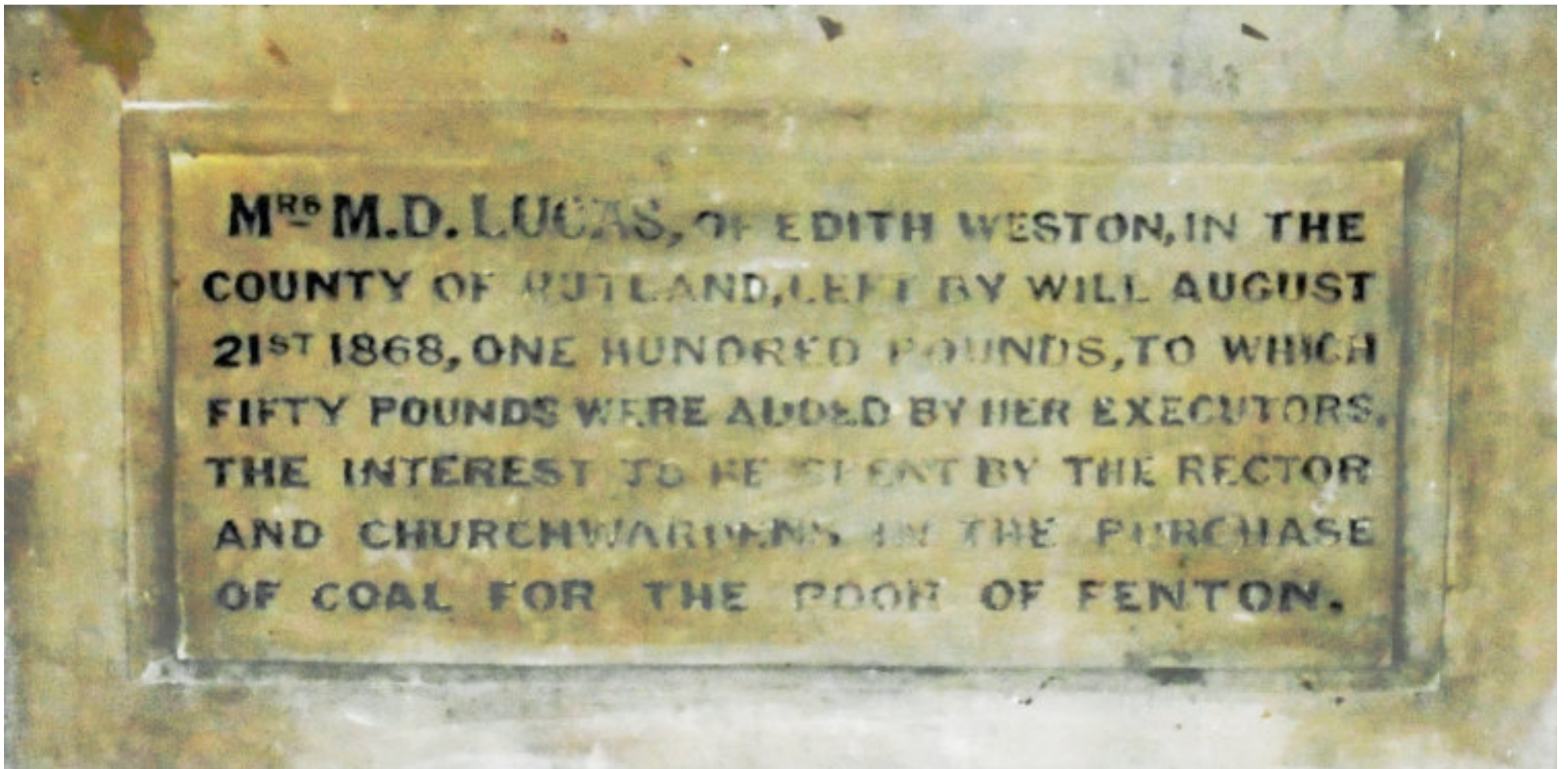
# THE FONT

Inside the church to your left is the font.



The font in the south aisle is 15<sup>th</sup> century. It is supported by four small octagonal shafts with a larger one in the centre. The locks on the top metalwork were used to secure the Holy Water used in Baptisms.

Above the porch entrance is a plaque



Mrs M.D Lucas of Edith Weston in the County of Rutland, left by will August 21st 1868, One Hundred pounds, to which Fifty pounds were added by he executors, the interest to be spent by the Rector and Churchwardens for the purchase of coal for the poor of Fenton

Notice that the columns in the nave are of two types. On the South side they are octagonal. On the North they are circular.



Some of the bench-ends with tracery and poppy heads were renewed in 1875, but there are many 15th century originals still in place.



The pulpit (with the exception of its modern stone base and steps), rood and chapel screens are 15th century, with multi foil headed lights and panels

# THE CHANCEL



The altar rails are 18th century. The chancel was rebuilt in grey ashlar stone in 1830. This date can be seen above the east window. The east end may have reused some of the original stones. The three light straight headed east window is in the style of circa 1400 and the single light round headed side windows are in the Norman style.

There is unusually no chancel arch.

# THE CHESTS



An old door  
forms the  
chest lid



In the chapel there is a plain chest, probably circa 1700 and another with a design of foiled arches and circles which is probably medieval (14<sup>th</sup> century)

# THE CHAPEL

In the east window of the chapel are some tiny fragments of medieval painted glass.



Most of the windows (with the exception of those in the chancel) which are all 14th and 15th century have finely carved head stops to their hood moulds.



# THE CHANCEL

In the north wall of both the chancel and chapel is an aumbry (a cupboard to hold sacred vessels for the Mass) without its doors. Below this window are brackets which once would have held an altar.



There is an interesting Norman pillar piscina in the south east corner of the chancel, resembling a scalloped capital on a shaft with a square base.

A piscina is used for washing communion vessels.

# CHURCH GROUNDS



Work began in late 2004 to weatherproof the roof and Fenton residents repaired and redecorated the church interior. Outside the original path was found, re-edged and re-gravelled together with a replanted garden area for re-opening in July 2005.

In 1970 the church needed extensive repairs and services had not been held for a number of years. Fund raising reached £10,000. In 1999 Mr Paul Fletcher, owner of a local company PFI, donated £17,000 and as a consequence English Heritage Lottery and Church Restoration Fund provided funding in excess of £100,000.

All Saints is one of a group of parishes in the Claypole Benefice, part of the Loveden Deanery within the Diocese of Lincoln.

Please visit the other churches in our benefice

**St Peters Claypole**

**St James Dry Doddington**

**All Saints Westborough**

**St Martins Stubton**

More information on our web site

[www.claypolebenefice.org](http://www.claypolebenefice.org)



DIOCESE OF LINCOLN  
faithful · confident · joyful



THE CHURCH  
OF ENGLAND